

Pure

Unlock your full research potential

December 2025, Riga



ELSEVIER



Advancing human progress together

National CRIS in Latvia – background and goals

Streamline Research Management, optimizing data workflows and reducing administrative burden.

Support Data-Driven Policy Making: the centralized data shall empower government agencies and stakeholders to proceed with national assessment exercises, make informed decisions based on real-time research insights.

Maximize Research Visibility, making it easier for researchers to showcase their findings.

Foster International Collaboration, helping Latvian researchers connect with their international counterparts, fostering cross-border collaborations that enhance the quality and impact of research.

Strengthen bridges between **Research and Innovation**, facilitating cross sector collaborations notably within the key priority areas for development.*



28th January 2025, Pure kick-off event, University of Latvia

Vision for National CRIS system

Latvia's transformative journey to adopt Pure as its national CRIS

- **Challenge:** efficient Research Collaboration & Innovation Infrastructure
- **Inspiration:** RSU's success with Pure
- **Goal:** Centralized research data to enhance visibility, collaboration, and impact



“The rollout of Pure is a significant step towards compiling the diverse contributions of our researchers meaningfully and transparently, as well as enhancing their recognition in Latvia and globally. The system’s introduction will make it easier to identify opportunities and pave the way to new interdisciplinary and international collaborations, where most new discoveries and innovations emerge today. Additionally, the system will facilitate the preparation of various scientific activity reports, allowing researchers to devote more time to their core responsibilities,”

Guntars Kitenbergs, Vice-Rector for Science at LU

Pure - the leading research information management system

WHO WE ARE

21 Years of service to the research community

100+ Dedicated staff

80+ Inbound/outbound integrations already built-in

1M+ Worldwide faculty and researcher profiles

ELSEVIER

WHO WE SERVE

550+ Academic and government customers, in **50+** countries

16 Regional user groups, across 6 continents



COMMUNITY OF USERS



Annual Pure Conference



Pure User Groups



Pure Academy certification



Webinars, Surveys
(95+ % score on customer satisfaction and renewal rate)

Need for Strategic Partnerships – who is working on the Pure project in Latvia

Latvian Higher Education and Science Information Technology Shared Service Centre (VPC)

Four main universities: University of Latvia, Riga Technical University, Riga Stradins University, Latvia University of Life Sciences and Technologies

All remaining research institutions in Latvia

Ministry of Science and Education of Latvia

Elsevier's Team

- Collaborative approach for interoperability and scalability
- Governance for data sharing

Elsevier team

SALES TEAM



Paula Milewska
Solutions Account Manager



Michał Nowak
Software Solutions Advisor

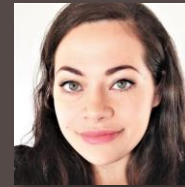
Point of contact for:

- New products and agreements
- Renewals of existing products

IMPLEMENTATION TEAM



Kresten Sørensen
Senior Implementation Manager



Marina Gerstnerlund
Implementation Manager

Point of contact for:

- Product Implementation and consultancy

How Pure works

and what advantages it offers you?

ELSEVIER

Pure Helps with Common Issues of Institutions

Institutional Challenges



Disconnected data sources



Hard to find reliable, updated information



Reports require manual work



Slow processes, e.g. on awarding



Funding competition, collaboration partners



Limited visibility (internal and public)

National Complexities



Mandatory national reporting



Strict data-quality expectations



Benchmarking/Assessment demands



Outcome-based budget distribution

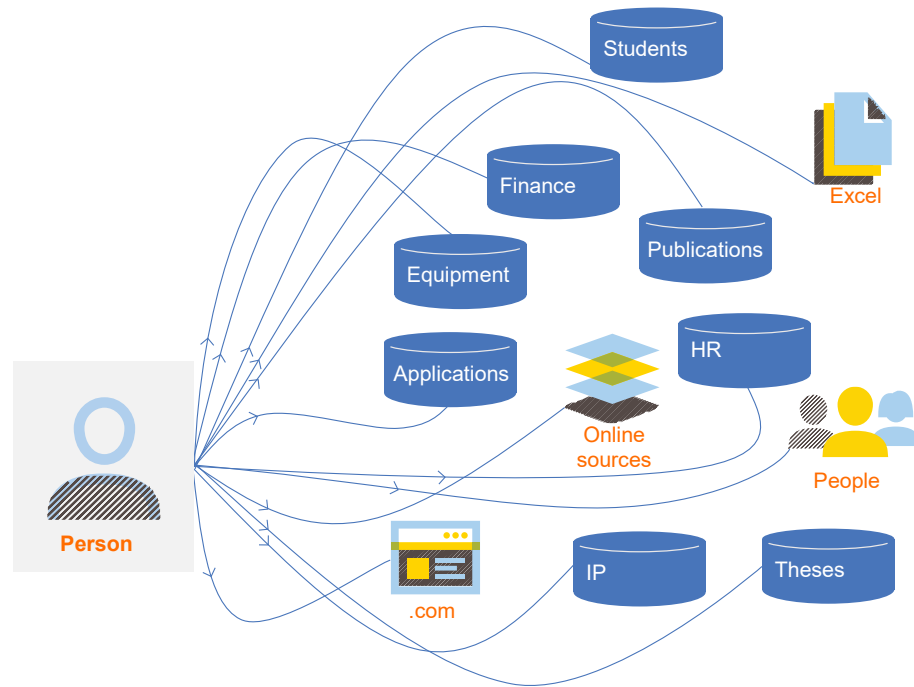


Regional-level visibility



Evidence of Impact to society

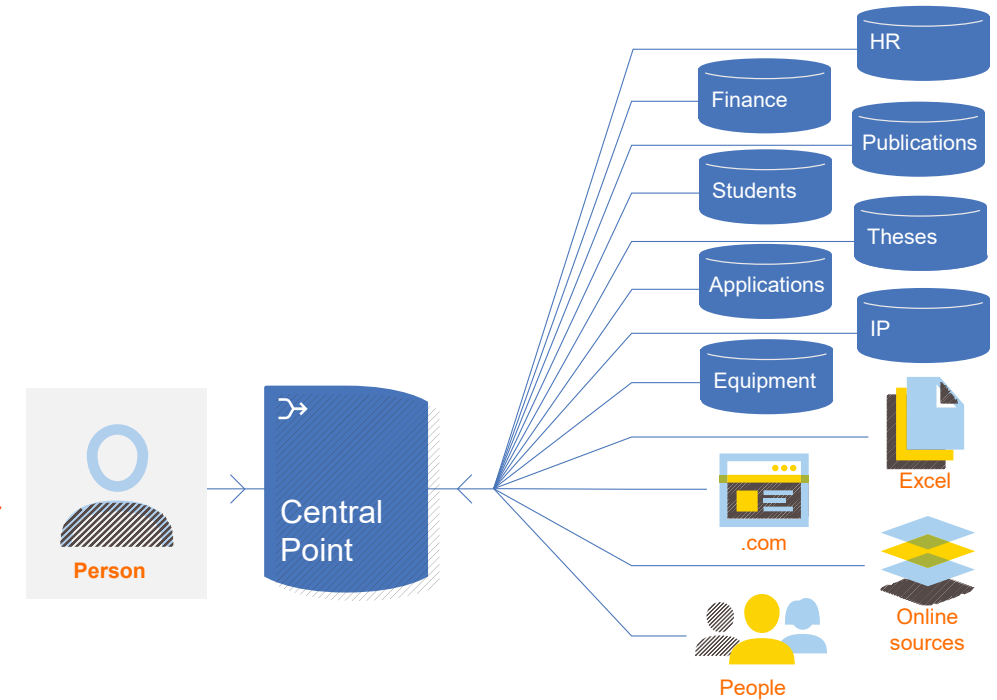
The Power of RIMS/CRIS Platforms



Disconnected Data Sources

Complicates research management, administration and networking and collaboration

Multiple IDs
Disparate information
Disconnected data
Non-homogeneous data
Available at high cost in FTE



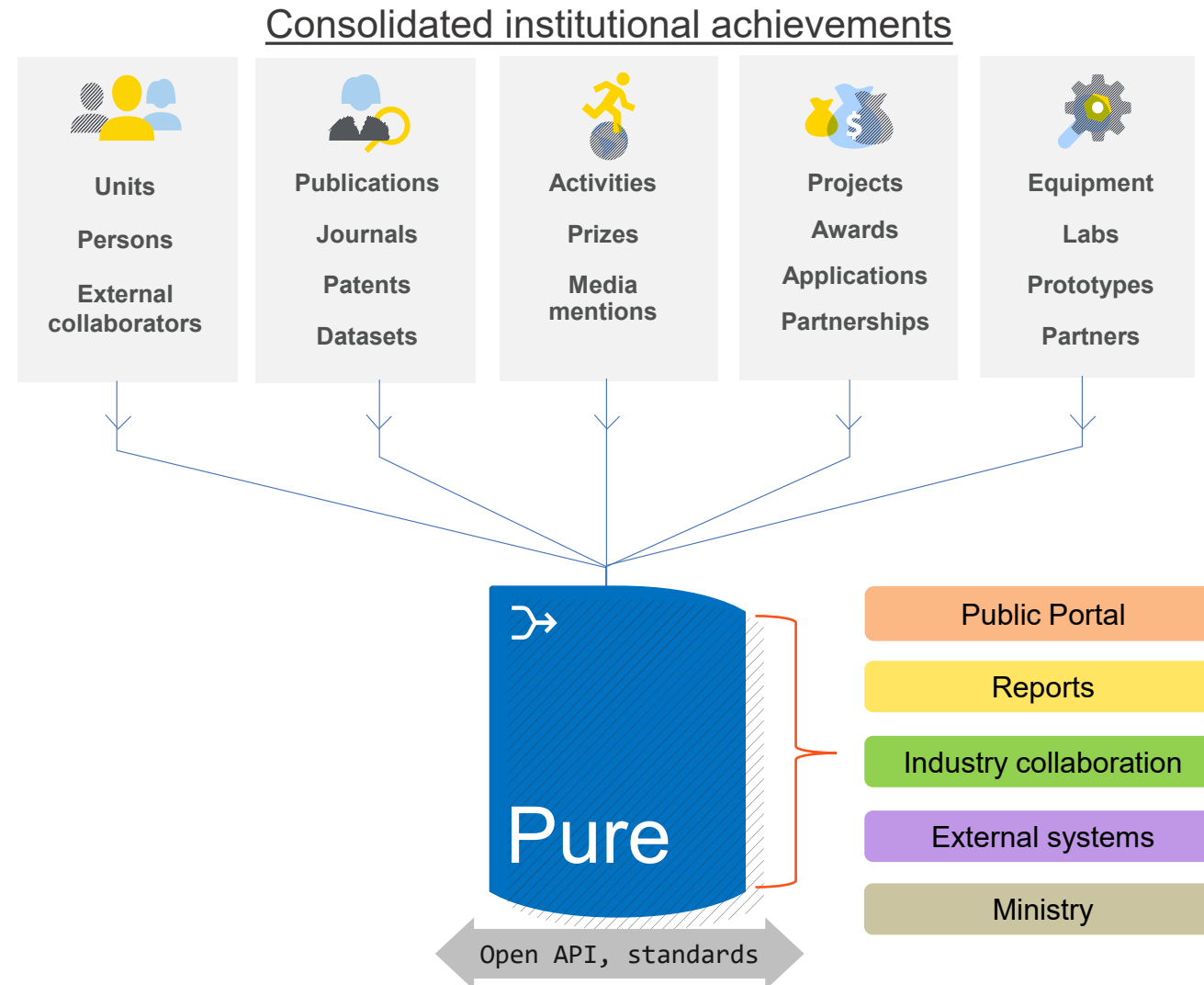
CRIS Integration

Simplifies research management, administration and researcher networking and collaboration

Unique IDs
Structured information
Interconnected data
Homogeneous data
Available at low cost in FTE

Key values of Pure system

- Rich data model
- Smart data integrations and automation
- Real-time dynamic reporting
- Support for public visibility and collaboration
- System's stability, flexibility, security, and full vendor support
- Community-driven ecosystem



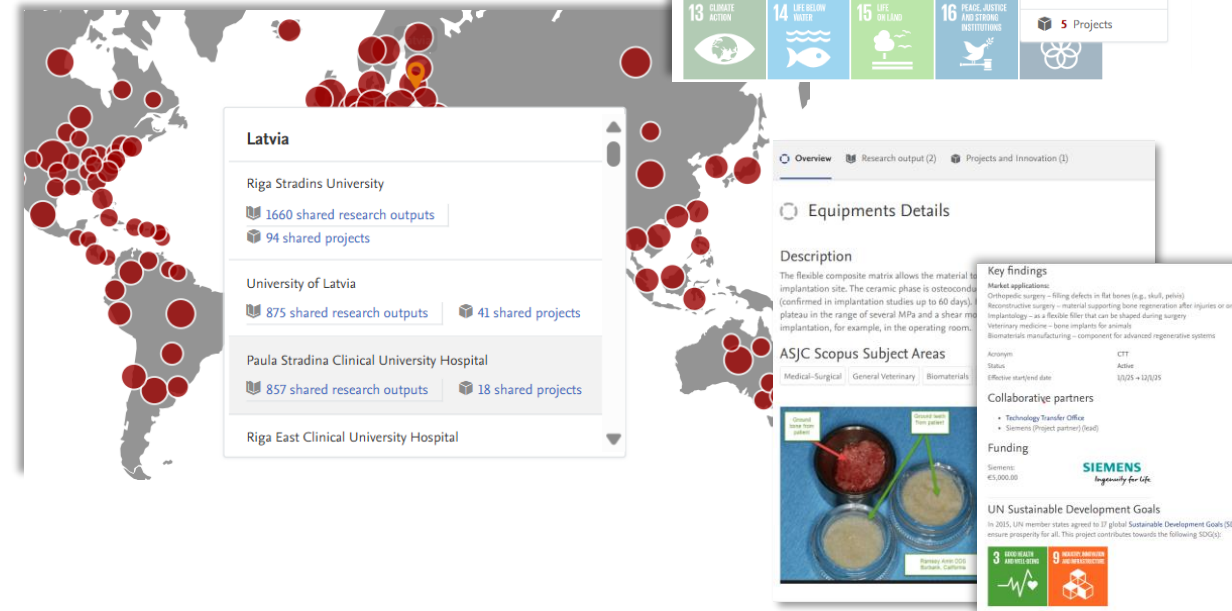
One Trusted Research Record for the Institution

- One authoritative system for people, outputs, projects, funding and courses
- Automated data capture from trusted internal/external sources
- Consistent, audit-ready reporting for funders, boards and evaluations
- Clear visibility of institutional strengths, innovations and focus areas
- Reduced administrative burden without expanding support staff
- Part of national community



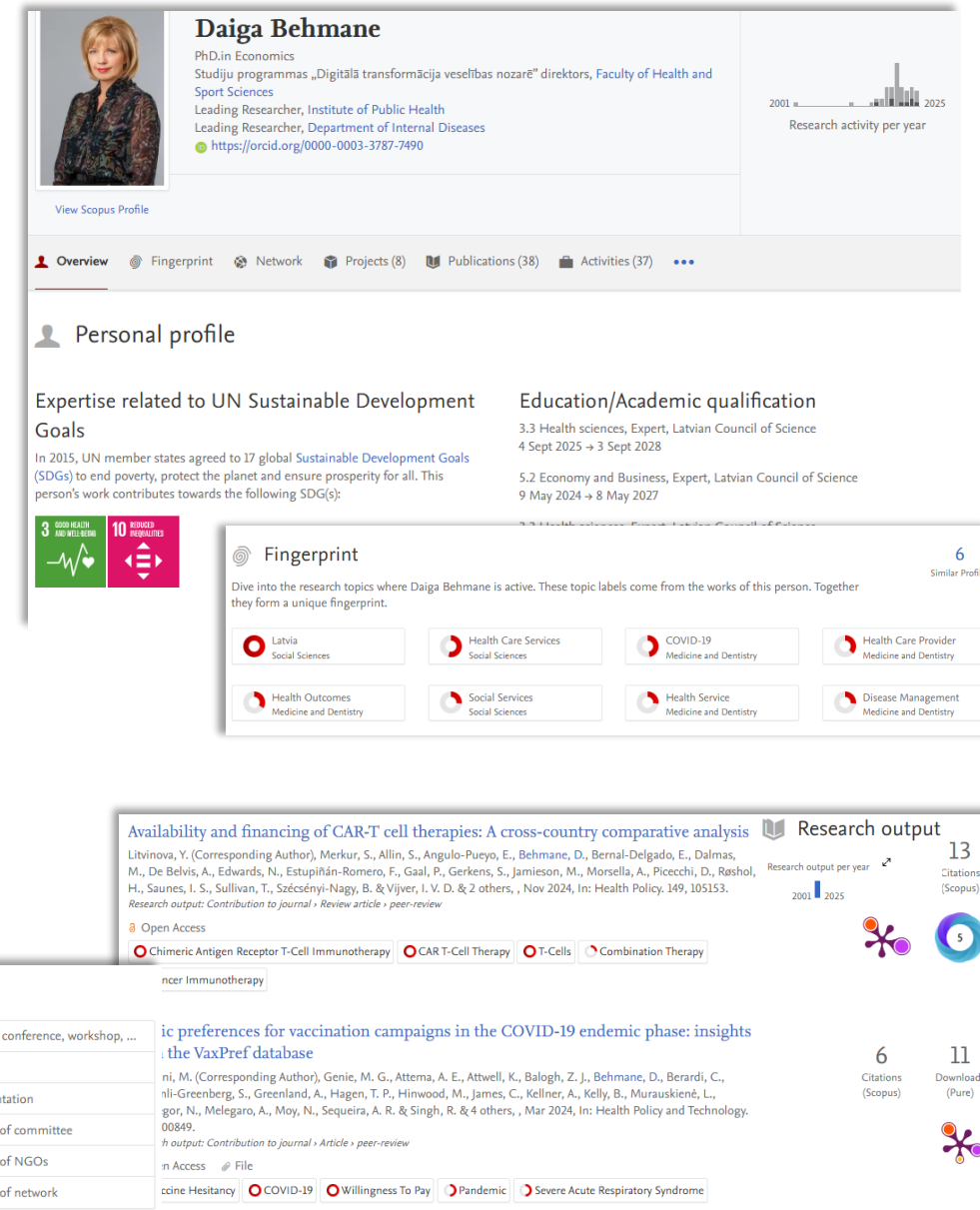
Rīga Stradiņš University Research Portal

RSU Research Portal aggregates information about all active units, researchers, and more, related to the Rīga Stradiņš University. The Portal is publicly available and with RSU. The research portal promotes contact to and collaboration with the university pages that contain additional information.
For general information about the Rīga Stradiņš University, visit RSU homepage.

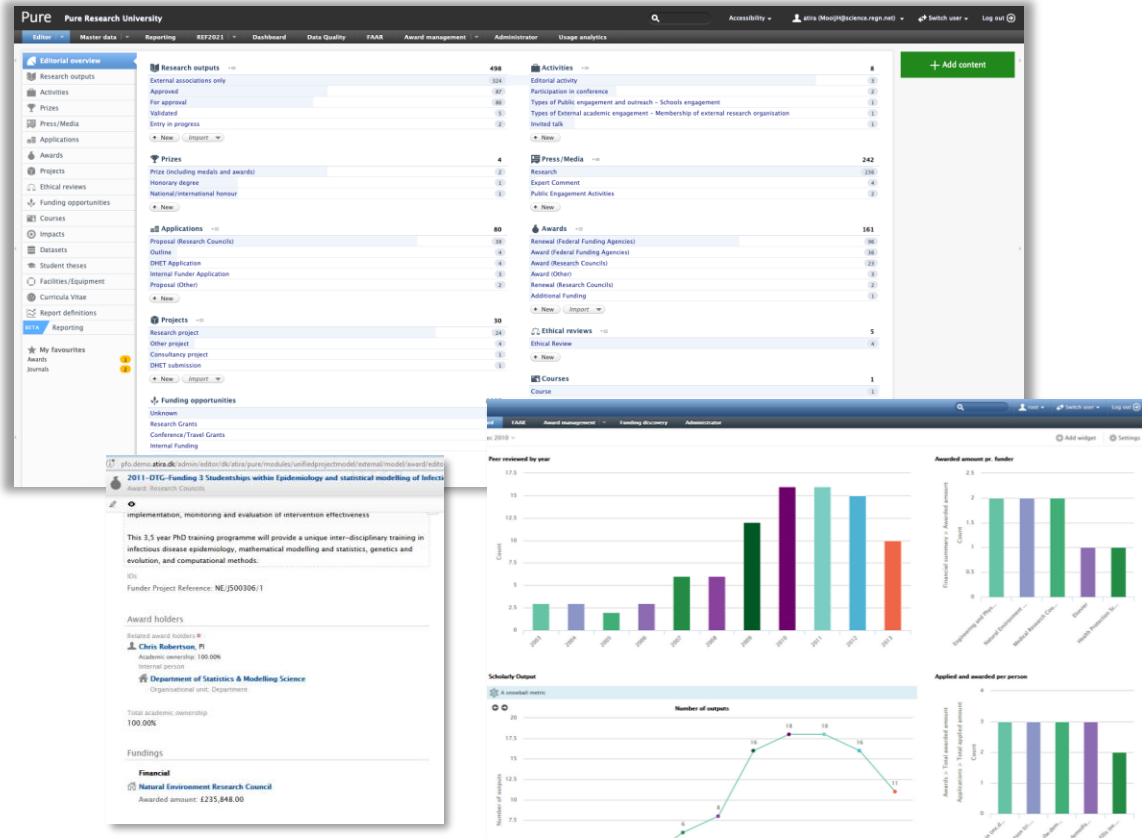


Complete Researcher Profile - Built Once, Used Everywhere

- An always up-to-date, professional research profile - automatically built and maintained
- Global-level visibility for collaboration and partnerships
- Expertise and research themes captured and visible to the right people
- Publications with metrics/indicators, Projects, Activities, auto-generated CV
- Full grant lifecycle - opportunities, proposals, approvals and post-award tracking.



Backend with controlled access (SSO authentication supported)



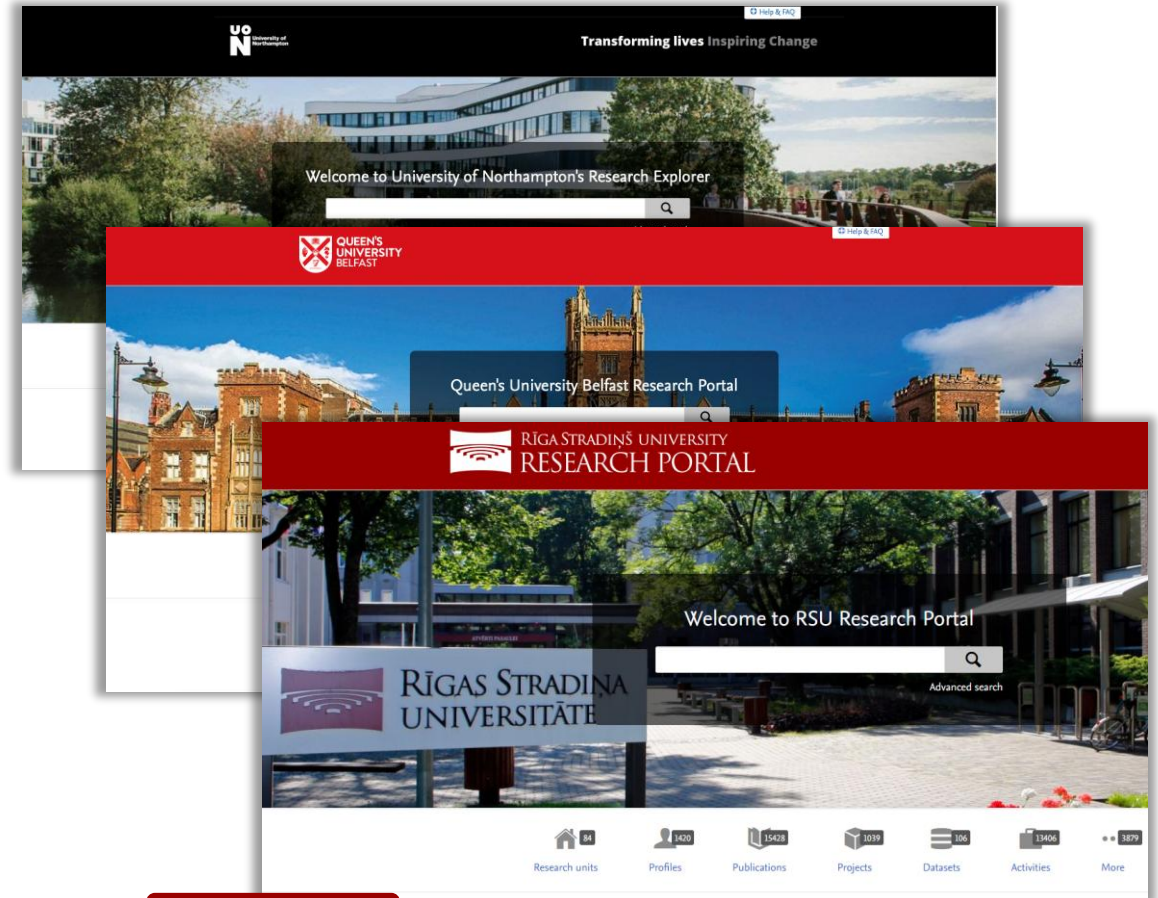
CORE

REPORTING

CV

AWARDS

Publicly accessible portal (SEO optimized)



PORTAL

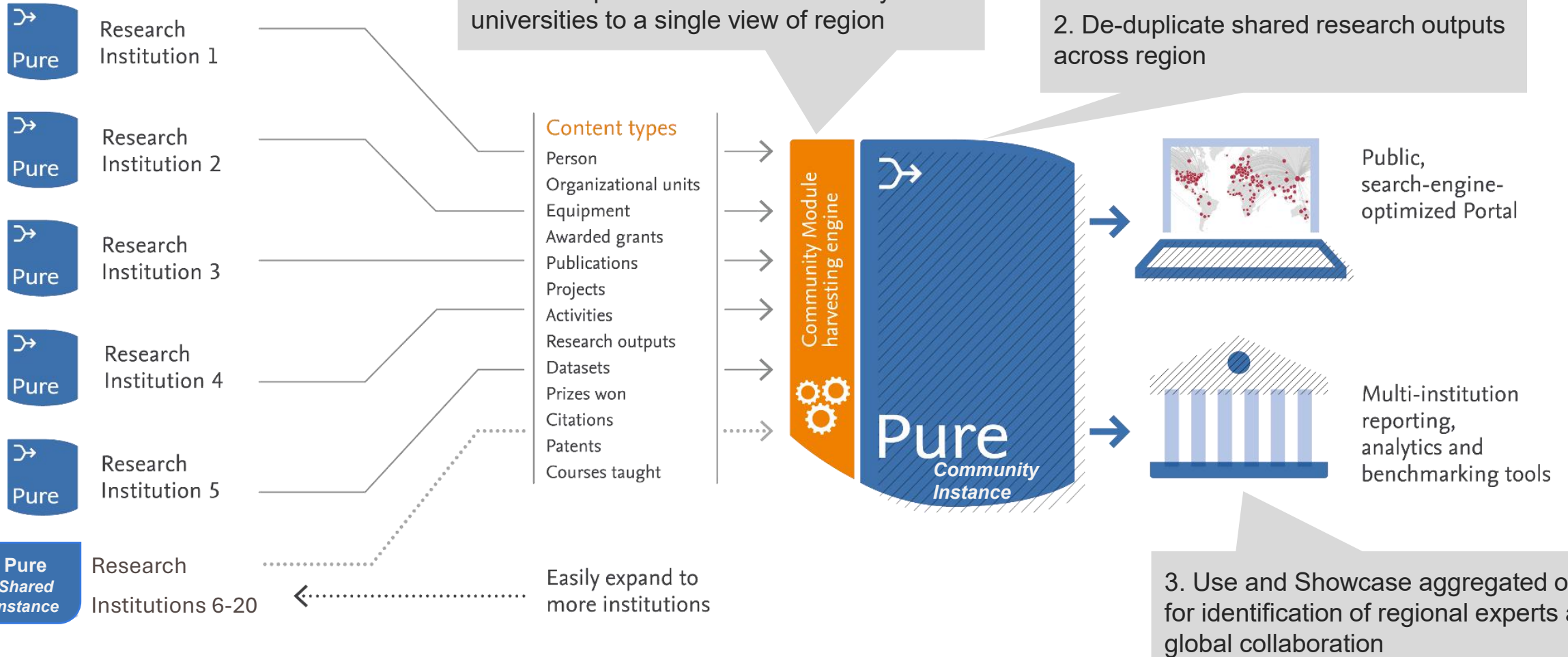
ELSEVIER

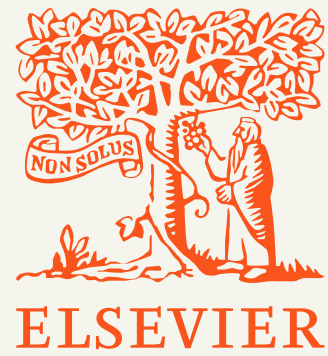
Pure Modules – flexible selection

Pure Community Module

1. Harvest public use data from many universities to a single view of region

2. De-duplicate shared research outputs across region





Advancing human progress together